

# Bonart

*We have been established for over 86 years making traditional Countrywear and Accessories, with this year increased ranges for children and introduction of ladieswear. All to the highest quality and still great value.*

*Bonart Town and Country at its best!*

## **Back Row**

*Shirts - ANNE and MAGGIE*

*Trousers - MOLE*

## **Front Row**

*Shirts - GLASTONBURY and WILLEN*

*Jackets - CUMBRAE, KEEPER and RHODESIAN*



*Classic Country Shirts*

5-7



*Casual Long Sleeve Shirts & Ladies Blouses*

8



*Jackets & Bodywarmers*

9-13



*Clothes for Outdoor Sports*

14-15



*Country Tweed Luggage*

16



*Trousers & Ladies Moleskins*

17-18



*Hats & Flat Caps*

19-20



*Knitwear*

21-23



*Polo Shirts*

23



*Accessories*

23-25



# Classic Country **shirts**



**Hambleton** 15-18  
Burgundy, Green 100% Cotton



**Malton** 15½-18  
Red Cotton Rich



**Astwood** 15-18  
Blue, Mauve 100% Cotton

Also  
available  
for  
LADIES



**Whitby** 15-18  
Red Cotton Rich



**Aylesbury** CS-CXL 14½-18  
Beige, Green Cotton Rich 2-4XL 5-6XL

Available  
in  
CHILDRENS  
sizes



**Adstock** 15-18  
Green Cotton Rich



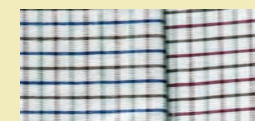
**Chichester** 15-18  
Green, Burgundy Cotton Rich



**Shalstone** 15-18  
Green 100% Cotton



**Haydon** 15-18  
Green, Brown Cotton Rich



**Hambleton**  
Green Burgundy



**Malton**  
Red



**Astwood**  
Blue Mauve



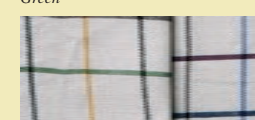
**Whitby**  
Red



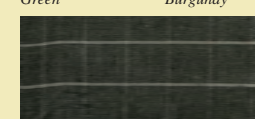
**Aylesbury**  
Green Beige



**Adstock**  
Green



**Chichester**  
Green Burgundy



**Shalstone**  
Green

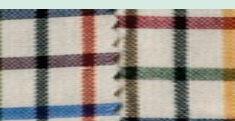


**Haydon**  
Green Brown

Shirts - WILLEN and ASTWOOD  
Trousers - RIDGEBACK and MOLE  
Tie - BRACE



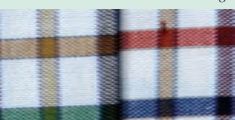
# Classic Country shirts



Blue Cambridge  
Green



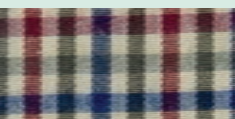
Green Ashby  
Beige



Green Gairloch  
Blue



Hulcott  
Green



Willen  
Red



Green Glastonbury  
Burgundy

**Glastonbury** CS-CXL 14½-18  
Green, Burgundy Cotton Rich 2-4XL



**Cambridge**  
Green, Blue Cotton Rich 15-18  
2-4XL



**Ashby** 15-18  
Green, Beige Cotton Rich



**Gairloch** 15-18  
Green, Blue Cotton Rich



**Hulcott** M-2XL  
Green Cotton Rich



Available  
in  
CHILDRENS  
sizes

Also  
available  
for  
LADIES



**Willen** CS-CXL S-2XL  
Red Cotton Rich



**Belmont** M-2XL  
Green, Blue, Red Cotton Rich



**Delta** M-XL 2-4XL 5-6XL  
Red, Green 100% Cotton



**Grendon** S-XL 2-4XL  
Beige, Green Cotton Rich



**Yeovil** M-XL 2-4XL  
Green, Red 100% Cotton



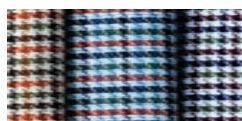
**Wells** M-2XL  
Green, Red 100% Cotton



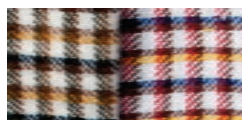
**Anne** 10-20  
Blue, Mauve 100% Cotton

Specially  
tailored  
for  
LADIES

**Maggie** 10-20  
Green, Burgundy Cotton Rich



Belmont  
Red Blue Green



Yeovil  
Green Red



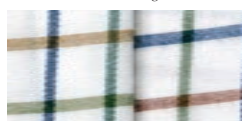
Delta  
Red Green



Wells  
Green, Red



Grendon  
Green Beige



Maggie  
Green Burgundy



Anne  
Blue Mauve





# Bonart

Town and Country

# jackets & bodywarmers



*Jacket - BARBEL*

*Blouse - MAGGIE*

*Trousers - MOLE*

*Bodywarmer - GIGHA*

## Town & Country jackets



**Cumbrae** CS-CXL S-XL 2-4XL  
Green, Brown Heavy fleece jacket with pile lining  
100% Polyester



**Buck** S-2XL  
Green Waterproof breathable jacket with Pi  
membrane. 100% Polyester



**Fulmer** S-2XL  
Green Smock jacket with large kangaroo  
pockets. 50% Wool 50% Viscose



**Rhodesian** CS-CXL M-2XL  
Green, High performance Dintex fabric.  
Hunting jacket, Waterproof 8000mm  
Breathable 8000mm with reinforced armour patches.



**Mastiff** M-2XL  
Green Dry waxed cotton. Fleece lined with  
real leather patches.



**Magpie** S-2XL  
Green, Navy Pull over fleece jacket with suede  
look trim. 100% Polyester



Town & Country **jackets**



**Barbel** M-2XL  
Green 100% Polyester. 3000mm breathable. 3000mm waterproof fleece jacket.



**Gosling** M-2XL 100% Polyester  
Green, Navy Full zip fleece jacket with suede look trim



Available in CHILDRENS sizes

**Keeper** CS-CXL XS-XL 2-4XL  
Green Waterproof breathable jacket. 100% Polyester with 100% cotton lining.



Hats -  
FOXHOUND  
PENFOLD  
Shirts -  
WILLEN  
AYLESBURY  
ASHBY  
Jacket -  
GAME  
Bodywarmers -  
GILLIE  
MONARCH  
SUILVEN

Town & Country **bodywarmers**



Available in CHILDRENS sizes

**Suilven** CS-CXL S-2XL  
Camel, Green 60% Cotton, 40% Nylon  
Quilted bodywarmer. Fleece lined collar with suede look shoulders.



Available in CHILDRENS sizes

**Bowfell** CS-CXXX XS-XL 2XL-6XL  
Green / Navy Quilted micro fibre bodywarmer with peach finish, zip & studs.



**Baffin** S-XL 2-4XL  
Green Country waistcoat. 100% Leather.



Available in CHILDRENS sizes

**Gillie** CS-CXL XS-XL 2-4XL  
Green only Quilted shooting vest with suede shoulder patches & trim. Peach finish micro fibre. 100% Polyester



Available in CHILDRENS sizes

**Gigha** CS-CXL XS-XL 2-4XL  
Brown, Green Heavy fleece bodywarmer with pile lining. 100% Polyester.



**Lochain** S-2XL  
Green 100% Polyester. Light weight multi pocket Gilet. Large poacher's pocket on back.



Town & Country **bodywarmers**



**Lord** CS-CXL M-XL 2-4XL  
Green, Navy Shooting waistcoat with suede look patches. 100% Polyester.



**Gull** S-2XL  
Navy, Green Fleece Gilet with suede look trim.



**Shooter** S-XL 2-4XL  
Green, Navy 100% Cotton with leather look trim.



Bodywarmers - SHOOTER and LORD  
Trousers - MOLE  
Shirts - HAMBLETON and AYLESBURY

# Bonart

## Clothing and Accessories for outdoor sports



The Bonart tweed is fashioned with the colours of the Scottish hillsides and woven by Gordon and Sheila Covell in their mill in the Outer Hebrides. Still woven in the traditional way with a thorn proof finish and a hard wearing Teflon coating.





Clothing for **outdoor sports**



GAME  
CORBETT  
MONARCH  
FOXHOUND  
HIND  
All Made in the UK



Available  
in  
CHILDRENS  
sizes

**Game** CS-CXL S-XL 2XL-4XL  
Action back country tweed jacket with  
Teflon coating with waterproof  
breathable membrane, cartridge pocket  
with straps. 100% Pure wool.



**Corbett** 34-44 46-54  
Fully lined breeks.  
Waterproof, breathable membrane in seat.  
100% Pure wool.



Available  
in  
CHILDRENS  
sizes

**Monarch** CS-CXL S-XL 2-4XL  
Country tweed waistcoat.  
Suede trim on shoulders & pockets.  
100% Pure wool.



**Hind**  
Heather Traditional knee high country field sock.  
80% Wool 20% Nylon  
Sizes 6-11

See Page 25 for full range of socks.



**Foxhound** 6½-8  
Pertex waterproof, breathable membrane.  
Moleskin trim under peak.  
100% Pure wool.

See Page 19 for full range of caps.

Limited Edition **Tweed Luggage**  
for outdoor sports and leisure



Made from our own  
tweed. 3-Ply laminated  
using 100% waterproof  
membrane. With the  
finest Solid Brass fittings.

Hal



Sheila



Robert



Cartridge Belt  
Cartridges not included



Gwen



Mollie



Robert (100 cartridges)

Gwen (75 cartridges)  
London pattern cartridge bags.  
Metal reinforcement bars and hinged back for loading.

Mollie  
Hand stitched block end suitable for both over and under  
or side by side.

Hal & Sheila Weekend bags.





# trousers

Shirts - ADSTOCK  
Jacket - RHODESIAN  
Trousers - RIDGEBACK & BURMESE



**Mole** 420 grams 31-33" leg 32-44  
Olive, Lovat. Classic moleskin trousers.  
2 side pockets. 1 back pocket.  
100% Cotton.



**Storm & Tempest** S-XL 2-4XL 5-6XL  
Navy, Green Breathable waterproof jacket and over  
trouser with taped seams. Jacket 2 zip pockets with  
flaps, map pocket, 2 chest pockets. Concealed hood.



**Weasel** 350 grams 31-33" leg 32-52  
Fawn, Olive, Gold Classic cord trousers.  
2 side pockets. 1 back pocket.  
Cotton rich.



**Burmese** CS-CXL M-XL  
Green, Dintex fabric waterproof breathable  
trouser; 8000mm breathable 8000mm  
waterproof.



**Setter** 32" Leg 32-42  
Green, Brown 100% Cotton



**Ferret** 420 grams 32-46  
Olive, Lovat 100% Cotton.



**Doberman** 30"- 44"  
Green 100% Cotton Western style jean with  
100% leather thornproof panels on front of legs.



**Ridgeback** CS-CXL M-2XL  
Green, Dintex fabric waterproof breathable  
trouser, reinforced armour panels matching  
Rhodesian jacket. 8000mm waterproof,  
8000mm breathable.



**Falcon** S-2XL  
Green 100% Nylon with reinforced patches.  
Waterproof and breathable.



**Moleskin Trousers** 10-20  
Olive, Lovat 420g Moleskin trousers.  
100% Cotton.

Specially  
tailored  
for  
LADIES

Available  
in  
CHILDRENS  
sizes

Available  
in  
CHILDRENS  
sizes





# hats and flat caps

**Penfold** 6¼-8  
Lovat, Olive 420gram  
To match moleskin trousers

**Boar** 6¼-8  
Flat cap to match Keeper jacket.  
Showerproof.

**Assorted Flat Caps**  
XXS-XS  
S-2XL

**Foxhound** 6¼-8  
Bonart tweed, pure wool.  
Teflon coated.  
Permatex waterproof.  
Breathable membrane, moleskin trim  
under peak.

Available  
in  
CHILDRENS  
sizes



**Kangal** S-2XL  
Green/Orange Town and Country hat with pullover  
safety feature and concealed pull down ear flaps. Waterproof  
and breathable to match Rhodesian jacket. Dintex fabric.



GENUINE  
SOUTH  
AFRICAN  
BUSH HAT

**Zambia** S-2XL  
Chocolate Brown 100% Suede



GENUINE  
SOUTH  
AFRICAN  
BUSH HAT

**Kenya** S-2XL  
Brown 100% Suede



GENUINE  
SOUTH  
AFRICAN  
BUSH HAT

**Tanzania** S-2XL  
Brown Suede and mesh



GENUINE  
SOUTH  
AFRICAN  
BUSH HAT

**Botswana** S-2XL  
Brown 100% Leather

**Coyote** S-2XL  
Green/Orange  
Baseball cap with pullover  
visible safety feature and  
concealed pull down ear flaps.  
Waterproof breathable to match  
Rhodesian jacket.  
Dintex fabric.





# Bonart



*Made from 100% pure British wool and  
manufactured in the UK.*



Woolmark



**Woodcock** M-2XL  
Olive, Sage, Camel 100% wool crew neck  
jumper with suede patches and woodcock  
embroidery.



**Spurnhead** S-2XL  
Green, Brown, Natural  
Suede patches on shoulder and elbow.  
100% Pure lambs wool.



**Highland** S-2XL  
Green, Oatmeal  
Crew neck pullover with cabling detail.



**Warbler** S-2XL  
Olive, Sage, Camel 100% pure wool.  
V-neck jumper with suede patches and  
pheasant embroidery.





# knitwear



**Shelduck** S-XL 2-4XL  
Olive, Sage, Camel V-Neck jumper with suede patches.  
100% Wool.



**Sawbill** S-XL 2-4XL  
Olive, Sage, Camel Crew Neck jumper with suede patches.  
100% Wool.



# polo shirts



**Brunton** CS-CXL M-2XL  
Green 60% Cotton 40% Polyester

# ties



**Beater** Khaki Burgundy Green



**Brace** Navy Burgundy Green Brown



**Ducks** Burgundy Green Brown



**Flies** Gold Red Green



**Muntjac** Gold Green Burgundy



100% silk ties 57"

# braces



**Pattern** Green Man Beige Gun Green Gun



**Stretch** Green Burgundy Beige



socks



**Garter**  
Corn, Cassat  
100% Wool.



**Partridge** Sizes 4-7, 6-11,  
11-13, 13-16 Olive, Navy  
Technically designed sock to  
keep the feet cool and dry.  
45% Coolmax 40% Wool.  
10% Nylon 5% Elastane



**Pheasant** Sizes 6-11  
Bracken, Heather, Moss  
Knee high country sock.  
70% Wool 30% Nylon.



**Windermere** Sizes 6-11  
Navy, Sage  
Technical high performance sock.  
52% Merino 34% Polypropylene  
14% Polyamide



**Raasay** Sizes 6-11  
Corn, Cassat  
Knee high cushioned foot.  
80% Wool 20% Nylon



**Quail** Sizes 6-11  
Bracken, Heather, Moss  
Boot length country sock.  
70% Wool 30% Nylon.



**Montrose** Sizes 6-11  
Corn, Cassat  
Knee high.  
97% Wool 3% Nylon.



**Alpine** Sizes 6-11  
Brown  
Brown chunky boot sock.  
53% Acrylic 35% Wool  
6% Cotton 6% Silk



**Hind** Sizes 6-11  
Heather  
Traditional country field sock.  
Knee high.  
80% Wool  
20% Nylon



**Fisherman** Sizes 6-11  
Cream  
Seaboot sock.  
50% Wool  
50% Polypropylene



**Marl** Sizes 6-11, 11-13,  
13-16 Black, Brown  
Marl boot sock.  
70% Wool 20% Acrylic  
10% Nylon.

sizes

ADULT SIZES Please note men's Town & Country Shirts are collar sized.

Approx

SIZE	XS	S	M	L	XL	2XL	3XL	4XL	5XL	6XL	7XL	8XL	9XL
COLLAR Inches		14 <sup>1</sup> / <sub>2</sub>	15-15 <sup>1</sup> / <sub>2</sub>	16-16 <sup>1</sup> / <sub>2</sub>	17-17 <sup>1</sup> / <sub>2</sub>	18-18 <sup>1</sup> / <sub>2</sub>	19-19 <sup>1</sup> / <sub>2</sub>	20-20 <sup>1</sup> / <sub>2</sub>	21-21 <sup>1</sup> / <sub>2</sub>	22-22 <sup>1</sup> / <sub>2</sub>	23-23 <sup>1</sup> / <sub>2</sub>	24-24 <sup>1</sup> / <sub>2</sub>	25-25 <sup>1</sup> / <sub>2</sub>
		37	38-39	41-42	43-44	46-47	48-50	51-52	53-55	56-57	58-60	61-62	63-64
CHEST Inches	36	38	40-42	42-44	44-46	46-48	50-52	54-56	58-60	62-64	66-68	70-72	74-76
	92	97	102-107	107-112	112-117	117-122	127-132	137-142	147-152	157-163	168-173	178-183	188-193
WAIST Inches		30	32-34	36-38	40-42	44-46	48-50	52-54	56-58	60-62	64-66	68-70	72-74
		76	81-86	91-97	102-107	112-117	122-127	132-137	142-147	152-157	163-168	173-178	183-188

SMALLER SIZES & CHILDRENS

Approx

SIZE	CS	CM	CL	CXL
CHEST Inches	20/22	24/26	28/30	32/34

LADIES SIZES

Approx

SIZE	8	10	12	14	16	18	20
------	---	----	----	----	----	----	----